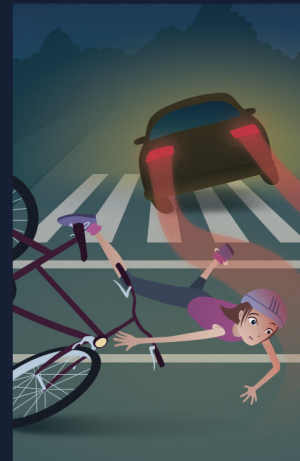


AFTER A LONG DAY AT SCHOOL...



BEING VISIBLE ON THE ROAD MEANS THAT YOU ARE IN CHARGE. **STAY IN CONTROL!** StayBright



10 METRES



50 METRES

Having the right lights, reflectors and reflective gear as a cyclist or pedestrian, means that drivers can see you as much as 40 metres earlier.

